

Automatic film processing unit

The APU 2000 set the standard for quality, consistency and ease of use in x-ray film processing.

The proposed combination of reliable performance, rapid throughput, daylight processing, simple operation, minimal maintenance, compact dimensions and flexibility in films and chemistry is unrivalled.

The APU 2000 processing is the cost effective choice for each x-ray film developer.



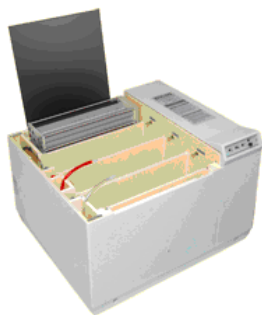
Patented film transport system

The self-cleaning film transport system holds the x-ray film stationary between two belts as it travels through the processing tanks. The film is held securely without pressure, avoiding the risk of mechanical damage and ensuring even exposure to the chemicals. This unique, fully proven system has far fewer moving parts than conventional roller assemblies and offers long service life with very low running costs.

Flexibility of films and chemistry

Films of different size and type can be processed simultaneously and may be loaded without stopping the machine, continuously and in any order.

Deep tanks providing long film path



Deep tanks give a long film processing path, allowing fast feeding and ensuring sufficient contact with the chemicals for an efficient

processing. The tanks narrow cross-section keeps their surface area small, reducing oxidation and evaporation to provide chemical economy.

Modular construction for low maintenance

APU 2000 x-ray processors are uniquely easy to maintain. The developer, fixer wash and dryer modules are light in weight and lift out in seconds for simple user servicing or exchange.

Visual warning of low chemicals

Warning lights indicate when topping-up of the chemicals is required as a result of processing and evaporation losses, with fail-safe shutdown if depletion reaches critical levels. An automatic chemical replenishment system is standard on the APU 2000.

Rapid processing

The APU 2000 delivers high quality, perfectly dry radiographs in just three minutes. Once warmed up, the machine automatically remains on continuous standby.

General features

Fully automatic processing is achieved at the press of a button.

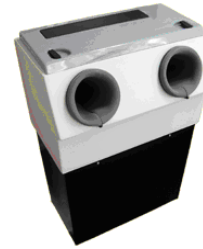
With its fast throughput and 355mm track width, the APU 2000 allows the continuous loading in random order of x-ray films.

Installation merely involves connection to a 13 A power supply, cold water supply and waste outlet.

For the accurate and stable operating temperature essential for producing radiographs of consistently high diagnostic quality, APU 2000 features a pumped chemical recirculation system. Water flow is controlled automatically.

No darkroom necessary

An optional lightproof loader allows the APU 2000 to be used without a darkroom, while the machine's smooth, easy-clean lines avoid the need to screen it from view. The optional loader offers the added convenience of a light-tight compartment for storing unexposed films in different sizes, unwrapped ready for use.



Optional machine stand

The processor's compact dimensions permit bench top use, although a robust, purpose-built stand is available if required.

Specifications

Mechanical									
	<p>Weights</p> <p>Processing unit</p> <table> <tr> <td>Empty</td> <td>53.6 kg</td> </tr> <tr> <td>Full</td> <td>78.3 kg</td> </tr> <tr> <td>Stand</td> <td>24.8 kg</td> </tr> <tr> <td>Total</td> <td>103.1 kg</td> </tr> </table>	Empty	53.6 kg	Full	78.3 kg	Stand	24.8 kg	Total	103.1 kg
Empty	53.6 kg								
Full	78.3 kg								
Stand	24.8 kg								
Total	103.1 kg								

Requirements		
Mains	V	220-240
Frequency	Hz	50-60
Consumption	A	13
Water supply	Bar	1-8
Debit	l/min	2

Misc.		
Film feed speed	mm/min	770
Maximum film width	mm	355
Film path	mm	2500
Tank capacities	liter	10 each
Warming-up time	min	Approx. 15
Processing time	min	3 (2 available)

Producer

Balteau NDT sa	
Voie de Liège, 12	
B-4681 Hermalle Sous Argenteau	
BELGIUM	
Tel.:	+32 4 374 75 75
Fax:	+32 4 374 75 85
E-mail:	balteau@balteau-ndt.com
Website:	www.balteau.com

Distributor

