

Automatic X-ray inspection system for aluminium castings

The AIS207 is available with product carrier (Ø 600 mm or Ø 1100 mm) with transport loop for carrier and with loading/unloading stations for manual or automated handling.

All types with Automatic Defect Recognition.



Specifications

Mechanical		
Multi-type, automatic handling for inspecting aluminium castings 3 axis handling of castings - 2 axis handling of X-ray components Robust machine base frame with steel panels and doors, fully enclosed		
Transport carrier without product specific design	mm	Ø 1100
Inspection area	mm	Ø 1000
Product height	mm	350
Max. payload of the carrier	kg	100
Transport level	mm	800
Transport width at entry and exit	mm	1100 (fixed)
Max. transport height (Automatic doors)	mm	350
Cycle time:		
- movement of the axis/position incl. defect detection in automatic mode	s	1,2
- for infeed / outfeed	s	4,0
Radiation protected window in the machine front side	mm	1000 x 600
Misc.		
Machine control system Siemens S7 with Profibus DP-Master Automatic image processing Automatic type recognition control Automatic calibrate system Communications with image processing computer Manual machine control and fault display Integrated radiation protection panel Rapid-change holders for X-ray tube Emergency stop and all the necessary safety components Segmented chain conveyor system Inlet and outlet channel Image converter and camera Axis drive control units Data communications components 19" rack system for X-ray tube control system Computer, keyboard and TFT flat screen Machine keyboard Display lamps		



X-ray components

CLD160 high voltage generator, adjustable: max. 160 kV - max. 5,0 mA - Frequency 30 kHz (± 100 Hz)

TSD 160/0 metal-ceramic X-ray tube

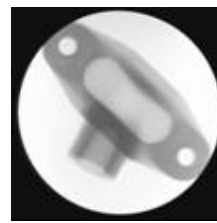
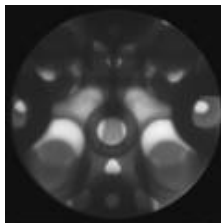
Power connection 220 V (-10% +15%), Standard high voltage connector

X-ray control unit, microprocessor controlled, several functions for safety, Alpha numeric display (20 signs)

Cable sets, high voltage cable, cable for grounding, diverse cables for controls and power supply

Water/air cooling system, with fluid sensor and temperature sensor

9" image converter with camera



Producer

Balteau NDT sa

Voie de Liège, 12
B-4681 Hermalle Sous Argenteau
BELGIUM

Tel.: +32 4 374 75 75

Fax: +32 4 374 75 85

E-mail: balteau@balteau-ndt.com

Website: www.balteau.com

Distributor